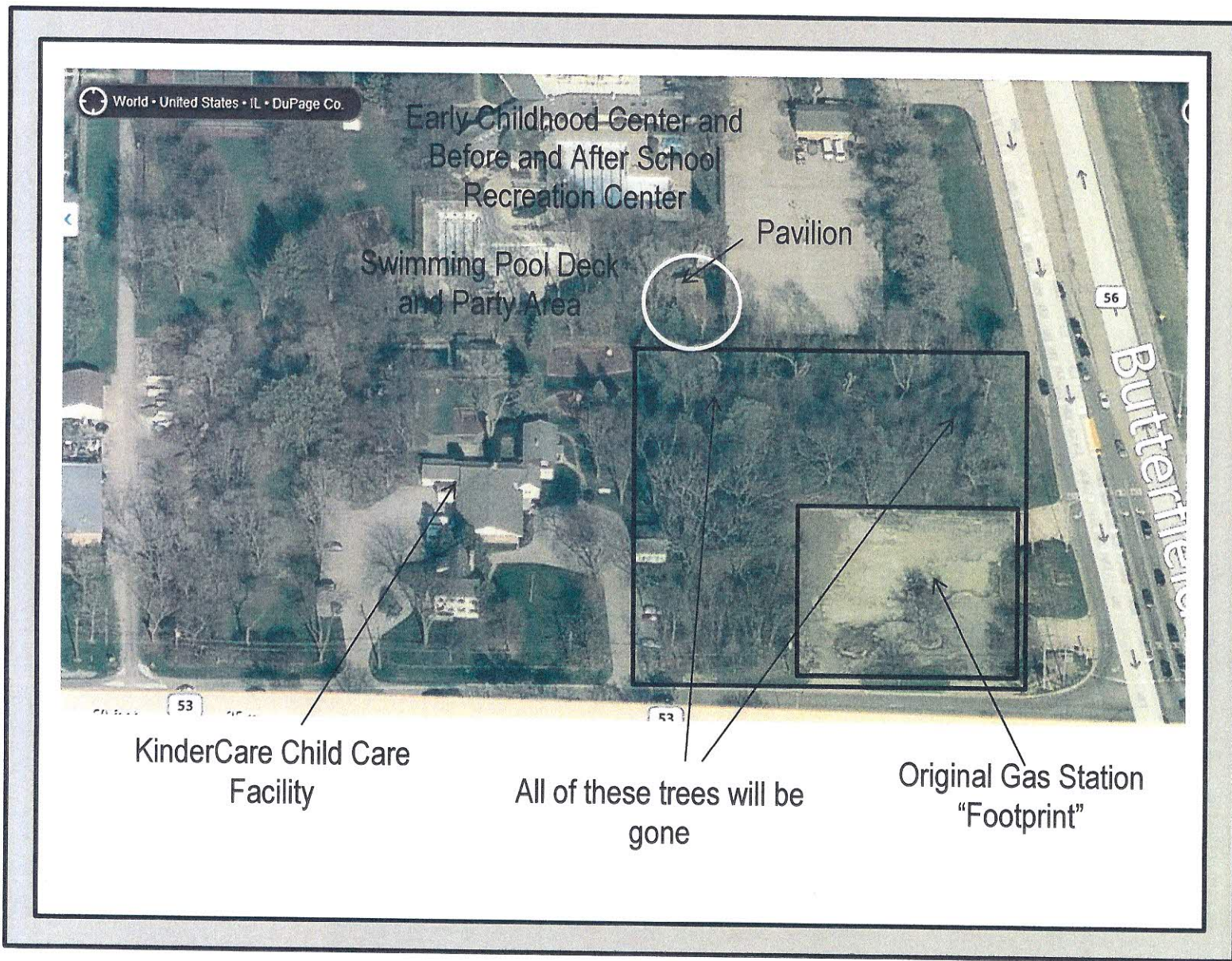


This document illustrates the very minor impact of the prior gas station development on its neighbors, as opposed to the mega development having 20 gas pumps - **Variance**, Car Wash - **Variance** and 15 car waiting line, Mini Mart - **Variance** with, outside storage – **Variance**. In addition to a **myriad of Signage Variances** requested, with no environmental shields being planned for the Park District neighbor immediately to the east.



- The Proposed Bucky's development is four times the size of the previous development.
- This development would destroy the "green", serene experience the community has enjoyed since 1965.
- This development exposes children on a daily basis to a high volume of environmental hazards; Air, Water and Noise.
- This development exposes children to the risks associated with a packaged liquor distribution site less than 100 feet away from their school and on the immediate path of a PADS resource center just one neighbor down.

